

# SERIES OPEN BOTTOM PANTS

pg. 26-27

RELAXED FIT

FULL-CUT DESIGN

LONGER INSEAM

OPEN BOTTOM

1440|1441

## SERIES BASEBALL/SOFTBALL PANT

100% polyester double knit • Relaxed fit-full cut with longer inseam and open bottom  
• Elastic waistband with tunnel belt loops  
• Two-snap closure • Zipper fly • Two set-in double welt back pockets (one on youth)  
• Reinforced knees • 35-inch inseam on Adult large • Graded inseam.

1440 ADULT: S-3XL

1441 YOUTH: S-XL



BLACK



WHITE



BLUE GREY

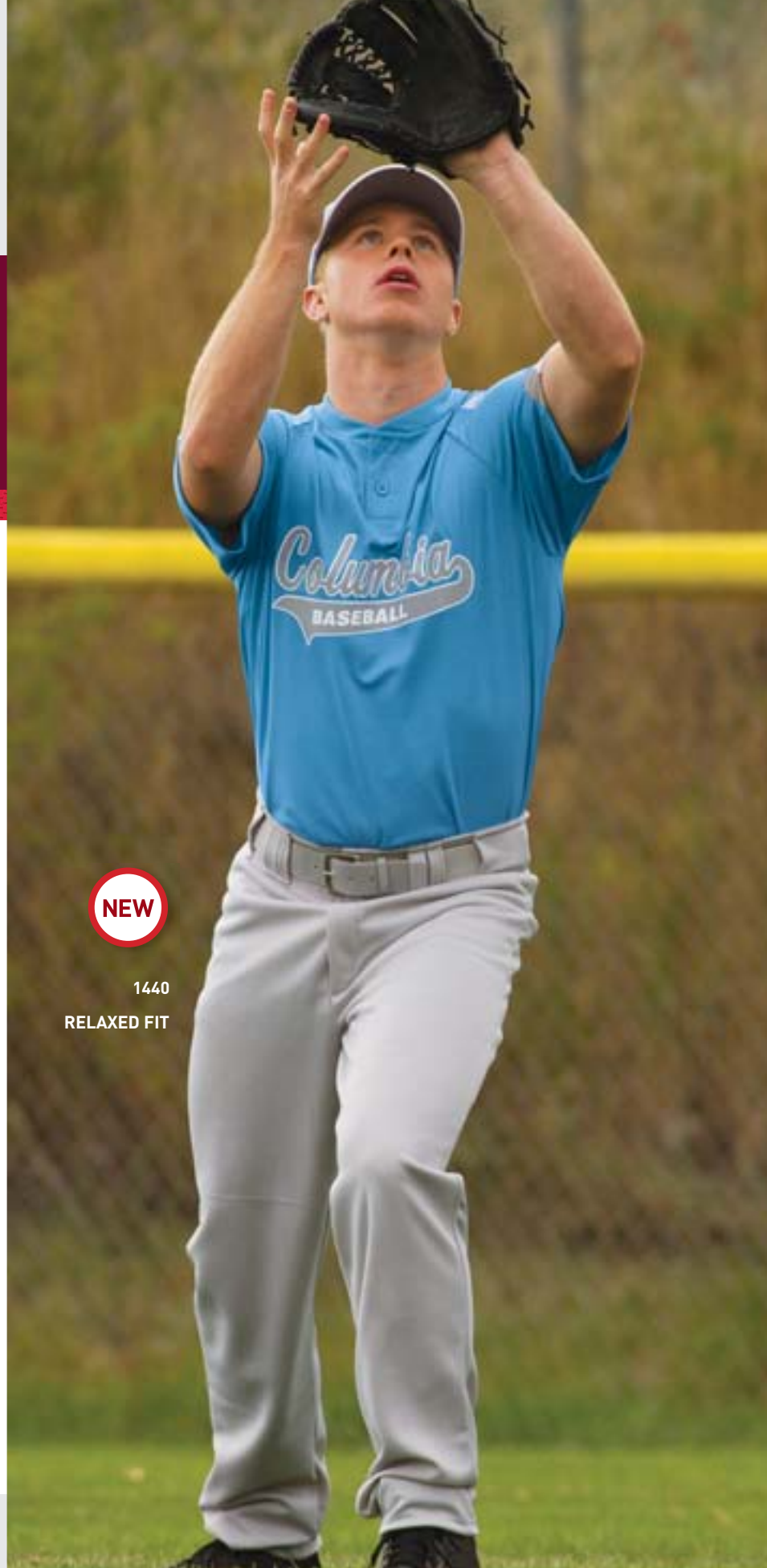


SILVER GREY



1440

RELAXED FIT



**1445|1446**

**SERIES BASEBALL/SOFTBALL PANT WITH PIPING**

100% polyester double knit • Relaxed fit-full cut with longer inseam and open bottom • Elastic waistband with tunnel belt loops • Two-snap closure • Zipper fly • Two set-in double welt back pockets (one on youth) • Reinforced knees • Contrast color piping at side seams • 35-inch inseam on Adult large • Graded inseam.

**1445 ADULT:** S-3XL

**1446 YOUTH:** S-XL



WHITE/  
BLACK



WHITE/  
RED



WHITE/  
ROYAL



WHITE/  
NAVY



WHITE/  
MAROON



WHITE/  
DARK  
GREEN



SILVER  
GREY/  
BLACK



SILVER  
GREY/  
RED



SILVER  
GREY/  
ROYAL



SILVER  
GREY/  
NAVY

**NEW**

1445

RELAXED FIT



# OPEN BOTTOM PANTS

RELAXED FIT



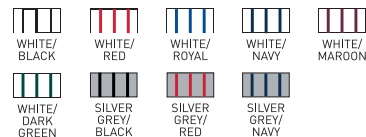
**882|883**

## STRIPED OPEN BOTTOM BASEBALL/ SOFTBALL PANT

14 ounce 100% polyester double knit  
 • Printed pinstripe • Relaxed fit-full cut with longer inseam and open bottom • Anti-roll elastic waistband with seven pro-style belt loops • Two-snap closure • Brass zipper fly • Two set-in double welt back pockets (one on youth) • Reinforced double-needle coverstitched back rise and side seams • Reinforced knees • 35-inch inseam on Adult large • Graded inseam.

**882 ADULT:** S-3XL

**883 YOUTH:** S-XL



RELAXED FIT



RELAXED FIT



**838|839**

## OPEN BOTTOM BASEBALL/SOFTBALL PANT

14 ounce 100% polyester double knit • Relaxed fit-full cut with longer inseam and open bottom • Anti-roll elastic waistband with seven pro-style belt loops • Two-snap closure • Brass zipper fly • Two set-in double welt back pockets (one on youth) • Reinforced double-needle coverstitched back rise and side seams • Reinforced knees • 35-inch inseam on Adult large • Graded inseam.

**838 ADULT:** S-3XL

**839 YOUTH:** S-XL



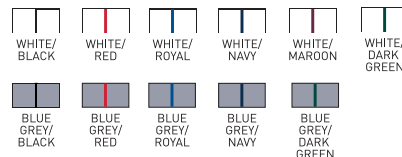
**868|869**

## OPEN BOTTOM BASEBALL/SOFTBALL PANT WITH PIPING

14 ounce 100% polyester double knit  
 • Relaxed fit-full cut with longer inseam and open bottom • Anti-roll elastic waistband with seven pro-style belt loops • Two-snap closure • Brass zipper fly • Two set-in double welt back pockets (one on youth) • Reinforced double-needle coverstitched back rise and side seams • Reinforced knees • Contrast color piping at side seams • 35-inch inseam on Adult large • Graded inseam.

**868 ADULT:** S-3XL

**869 YOUTH:** S-XL





**830|831**

**FOURTEEN-OUNCE BASEBALL PANT**

14 ounce 100% polyester double knit • Anti-roll elastic waistband with seven pro-style belt loops • Two-snap closure • Brass zipper fly • Two set-in double welt back pockets (one on youth) • Reinforced double-needle coverstitched back rise and side seams • Reinforced knees • 31-inch inseam on Adult large • Elastic cuffs • Graded inseam.

**830 ADULT:** S-3XL

**831 YOUTH:** S-XL



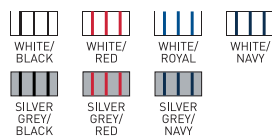
**835|836**

**FOURTEEN-OUNCE STRIPED BASEBALL PANT**

14 ounce 100% polyester double knit • Printed pinstripe • Anti-roll elastic waistband with seven pro-style belt loops • Two-snap closure • Brass zipper fly • Two set-in double welt back pockets (one on youth) • Reinforced double-needle coverstitched back rise and side seams • Reinforced knees • 31-inch inseam on Adult large • Elastic cuffs • Graded inseam.

**835 ADULT:** S-3XL

**836 YOUTH:** M-XL



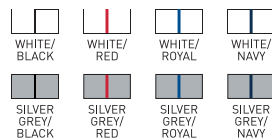
**833|834**

**FOURTEEN-OUNCE BASEBALL PANT WITH PIPING**

14 ounce 100% polyester double knit • Anti-roll elastic waistband with seven pro-style belt loops • Two-snap closure • Brass zipper fly • Two set-in double welt back pockets (one on youth) • Reinforced double-needle coverstitched back rise and side seams • Reinforced knees • Contrast color piping at side seams • 31-inch inseam on Adult large • Elastic cuffs • Graded inseam.

**833 ADULT:** S-3XL

**834 YOUTH:** M-XL



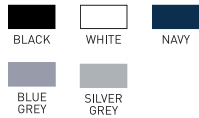


## 801|811

### SOFTBALL/BASEBALL PANT

100% polyester double knit • Elastic waistband with tunnel belt loops  
 • Two-snap closure • Zipper fly • Right back patch pocket  
 • Reinforced knees • Elastic cuffs • Graded inseam.

**801 ADULT:** S-2XL  
**811 YOUTH:** XS-XL

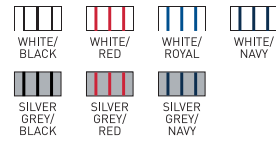


## 815|816

### STRIPED SOFTBALL/BASEBALL PANT

100% polyester double knit • Printed pinstripe  
 • Elastic waistband with tunnel belt loops  
 • Two-snap closure • Brass zipper fly • Right back patch pocket  
 • Reinforced knees • Elastic cuffs • Graded inseam.

**815 ADULT:** S-XL  
**816 YOUTH:** XS-XL

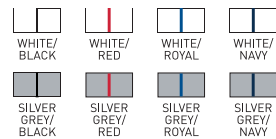


## 820|821

### BASEBALL/SOFTBALL PANT WITH PIPING

100% polyester double knit • Elastic waistband with tunnel belt loops  
 • Two-snap closure • Zipper fly • Right back patch pocket  
 • Reinforced knees • Contrast color piping at side seams  
 • Elastic cuffs • Graded inseam.

**820 ADULT:** S-XL  
**821 YOUTH:** S-XL



# PULL-UP PRO PANT WITH BELT LOOPS

**863|864**

## PULL-UP PRO PANT

100% polyester double knit • Elastic waistband with inside drawcord • Belt loops • Right back patch pocket • Reinforced knees • Elastic cuffs • Graded inseam.

**863 ADULT:** S-XL

**864 YOUTH:** XS-XL



864

**808|804**

## PULL-UP SOFTBALL/BASEBALL PANT

100% polyester double knit • Elastic waistband with inside drawcord • Right back patch pocket • Reinforced knees • Elastic cuffs • Graded inseam.

**808 ADULT:** S-XL

**804 YOUTH:** XS-XL



804



BACK POCKET

NEW



1225

1228  
5-INCH

# LADIES WICKING DUO KNIT PERFORMANCE UNIFORMS

WICKS MOISTURE

LIGHTWEIGHT

LONG TERM DURABILITY

TWO-TONE SHEEN

1225



## LADIES DIAMOND JERSEY

100% polyester wicking Duo Knit • Ladies' fit • Heat sealed label • Contrast color piping trim around neck • Raglan sleeves with contrast color sleeve insert with piping on front • One-button placket • Fishtail bottom.

1225 LADIES: XS-2XL



1228



## LADIES DIAMOND SHORT

100% polyester wicking Duo Knit • Ladies' fit • Heat sealed label • Covered elastic waistband with inside drawcord • Contrast color piping on side seam • 5-inch inseam.

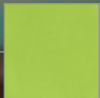
1228 LADIES: XS-2XL



928



RACERBACK



WICKING DUO KNIT

972  
7-INCH  
(Girls Inseam Graded)

928|929



## LADIES WICKING DUO KNIT CRUSH JERSEY

100% polyester wicking Duo Knit • Ladies' fit • Heat sealed label • Contrast color self-fabric V-neck collar • Two-color side panels with triangular accent panel • Racerback styling.

928 LADIES: S-2XL

929 GIRLS: S-L



972|975



## LADIES WICKING DUO KNIT ATTACK SHORT

100% polyester wicking Duo Knit • Ladies' fit • Covered elastic waistband with inside drawcord • Two-color side panels with triangular contrast insert • 7-inch inseam • Girls inseam graded.

972 LADIES: S-2XL

975 GIRLS: S-L